

**Friday, December 5th
8:30am – 2:00pm
Annadele's Plantation
Covington, LA
6 hours ACERP credit**

Fall 2008

**All You Want for Christmas: Free CE!
Hard & Soft Tissue Regeneration and the PerioSeal Implant System
Featured Speaker: Dr. Donald Callan**

You and your team are invited to attend an event that we are extremely excited to host. This continuing education offering will be held at **Annadele's Plantation** in Covington and features **Dr. Donald Callan** who will present an introduction to the advantages of the **PerioSeal Implant System**.

PerioSeal is different. Unlike other implants systems, PerioSeal **addresses the issue of the micro-gap and is designed to provide a better biological and restorative implant**, leading to better long-term results for you and your patients.

Enclosed are two of Dr. Callan's articles about the challenges that bacteria create for implants in the implant-abutment interface. These articles are a wonderful introduction into what we will learn on **December 5th**. Also enclosed is a detailed flyer about the event.

It is our pleasure to present this **complimentary CE course, with 6 hours ACERP credits**, to you and your team. We hope you will join Dr. Callan and our team to learn about how PerioSeal implants can dramatically impact your patients and your practice. For more information about PerioSeal prior to the event, you may contact our local PerioSeal rep, Richard Smith, at (985) 966-1908. Richard can also be reached by email at Richards@perioseal.com.

Valuable information, a great location and great food – what a wonderful way to celebrate the holidays! We hope to see you there!

www.endodonticcenter.com

We have revamped our website to make it a **powerful tool** for you and your patients. We know that when you refer a patient to another practitioner, it is important to make that process as **simple and comfortable** as possible for you both. Our website provides a tremendous amount of information that will help your patients understand why they are being referred to a specialist, and allow them to become **familiar with our practice before their scheduled visit**.

For you, there are archived issues of past newsletters, and information about the clinical and technological aspects of services we provide. Also, **encouraging your team members to explore the site will better educate them about the referral process**, what your patients can expect, and about our team and the services we offer. Since your team often reinforces your recommendations to your patients, **having this knowledge will help them better communicate on your behalf**.

All of this is intended to help bridge our practices so that from beginning to conclusion, the **referral process is smooth, simple and comfortable for your patients**. As an added incentive, we've enclosed a **"Website Treasure Hunt" contest form for you and your team with a chance to win a feast from HoneyBaked Ham**. Please see the form for details and visit www.endodonticcenter.com to check out what we have to offer you and your patients.

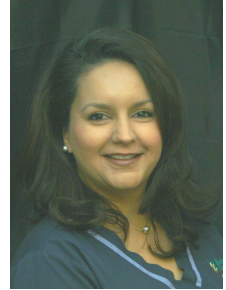
Coming Soon in 2009!

- **E-referrals** *Refer your patients electronically!*
- **E-reports** *Access your patients treatment history with your exclusive login and password!*

Welcome, Carolina!

Since our last newsletter, we have had the good fortune to have **Carolina Frickey** join our team. Carolina has a background as a **skilled medical assistant** and was first a patient in our practice. When our team member and web designer Barry left for college, we pursued Carolina because she had expressed an interest in converting to dentistry. If it is possible to be a **dental-assisting prodigy**, then Carolina fits the bill. Her natural compassion and kindness are such tremendous assets for both our team and the patients for whom we care.

Originally from New Orleans, Carolina has lived in Mandeville with her 12 year-old son, Devin, for the past 10 years. **We are thrilled to have this amazing woman as part of our team!**



We Are Here to Help You Grow!

Have you wanted to transmit digital films through email but need some tips on how to make that happen? Would a clinical team member benefit by observing digital radiographic techniques? Are there any other practice issues where a little coaching might be helpful? In addition to providing you and your patients with (superb!) endodontic services, we are also available to assist you and your team in other capacities.

Every year, we invite endodontic residents from LSUSD to spend a day in our practice and we share information about how we developed our practice from soup to nuts. We provide this opportunity because we hope to make the transition from student to practitioner less overwhelming. **In our dental community there are countless resources available to help improve the way we practice.** Sharing knowledge can only enhance the level of care that our patients receive.

We currently offer the following services to enhance your practice:

- Assistance with transmission of digital images through email
- BLS for Healthcare Providers certification
- Team Lunch n' Learn brought to you on the topic of your choice, or "Service Excellence", "Internal Marketing", "High Impact Verbal Skills"
- Job shadowing: send your team members on an Endodontic Center field trip. We can help boost skills with digital radiography, intra-oral images, patient communication, *and more!*

If you need a life-line or wish you could phone a friend, we're here for you. **We are truly "at your service" and happy to help you and your team grow your ideal practice.** Give us a call at (985) 626-0111.

We are proud to assist you in growing your practice and committed to providing your patients with exceptional care. Our goal is to help your patients to continue their restorative treatment with you as quickly and predictably as possible. Our success is measured by your success. Please let us know how we can help you continue to excel.

Sincerely,

Dr. Catherine A. Hebert and the EC Team

Did you know?

Overall, **97 percent of nonsurgical root canal-treated teeth remain functional** over an average follow-up time of more than eight years!