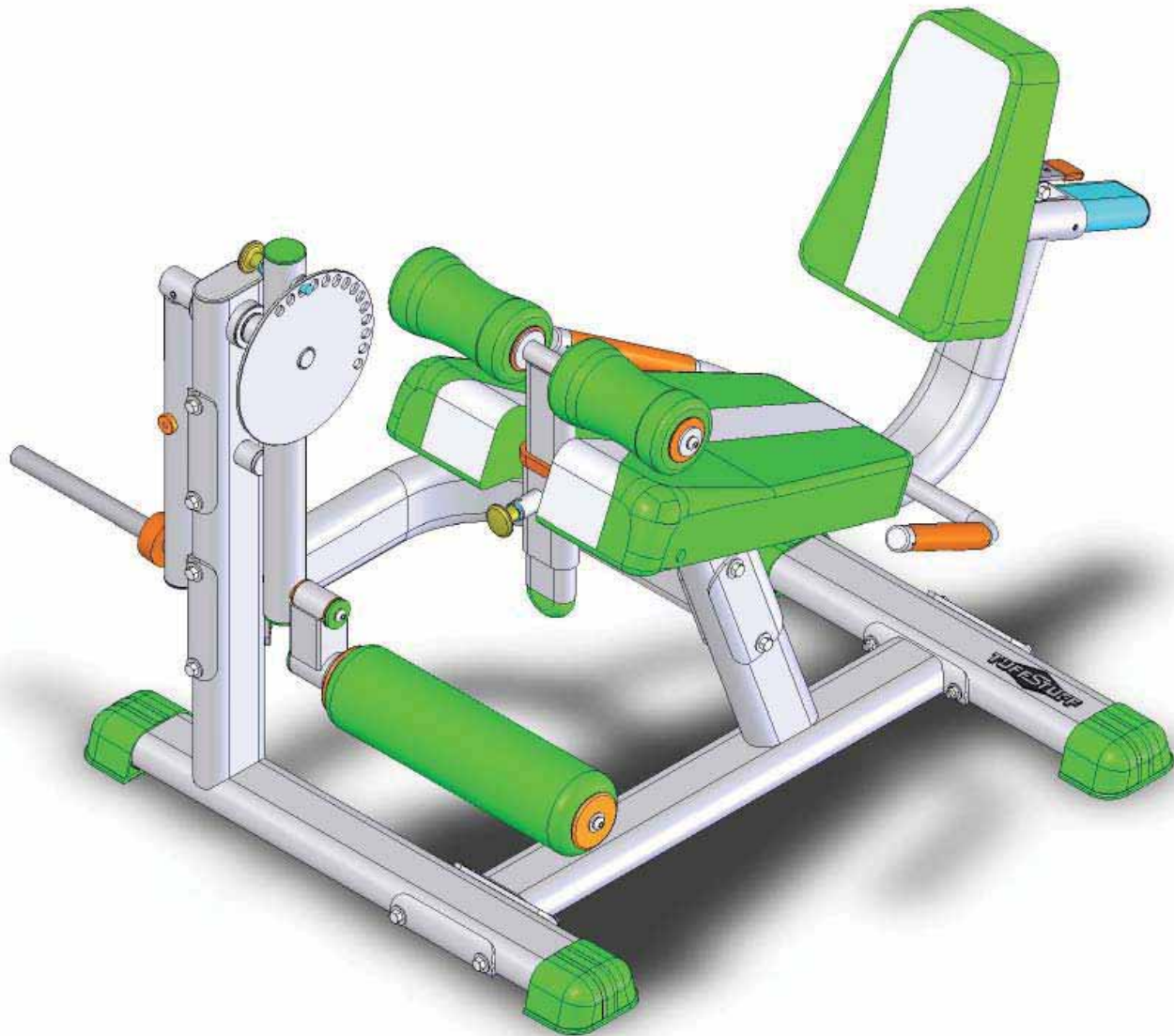


OWNER'S MANUAL

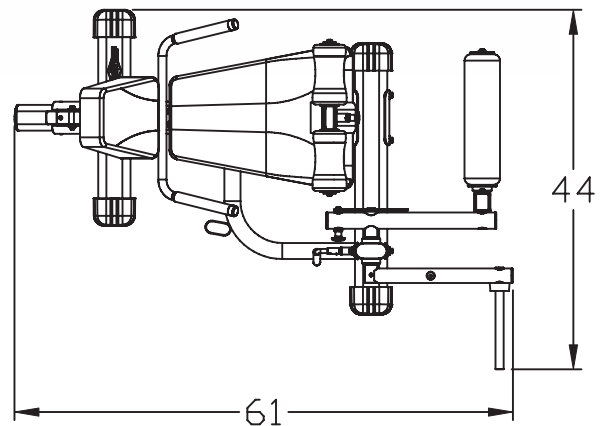


RLE-382

Seated leg ext / curl bench



AMERICA'S PREMIER EXERCISE EQUIPMENT



RLE-382
L 61" W 44" H 38"

RLE-382 Rev1
Revision Date 9-11-2008

Introduction

About the RLE-382 Seated leg ext/curl bench

Congratulations on your new purchase of the RLE-382. We hope you are completely satisfied with this product and wish you many years of enjoyment.

Tuff Stuff Equipment

This Tuffstuff product has been built to precise quality standards and has been carefully packaged to ensure that damage will not occur during shipment. The Home Lifetime Warranty and signature indicating final inspection has been conducted by our line foreman, is an expression of our confidence in the completeness, the materials, and workmanship of this product.

Warranty

SEE A COPY OF WARRANTY ON BACK PAGE.

Registration Card

To avoid unnecessary delays in warranty service and to insure that a permanent record of your purchase is on file with our factory, be sure to complete the warranty registration card and send it to TuffStuff Fitness Equipment today.

Specifications

1. Maximum Wt. Capacity - 200 lbs.
2. Total Machine Weight - 145 lbs.

Note: Due to continuing product improvements, specifications and designs are subject to change without notice.

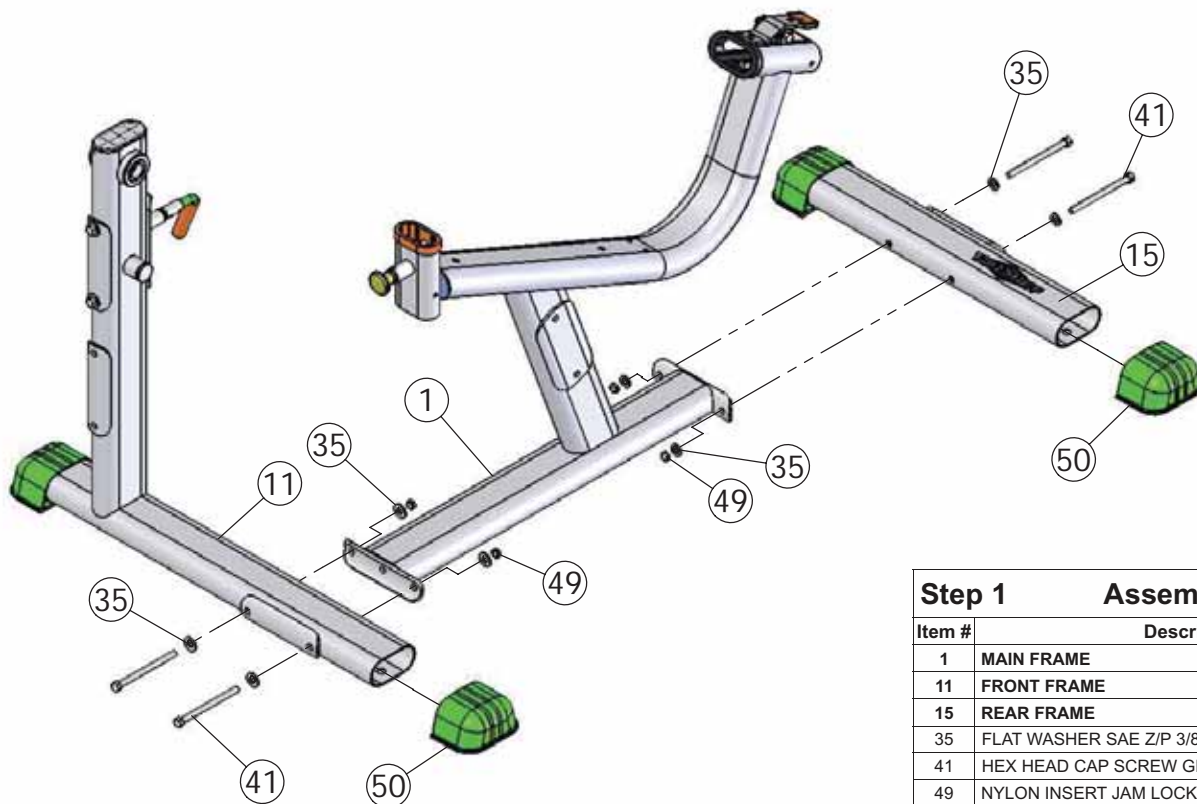
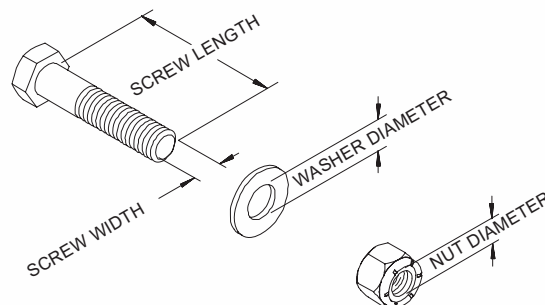
Prior to the Assembly of the RLE-382

1. We advise you to consult your local Tuff Stuff retailer if you should have a question or problem regarding the proper assembly of this unit.

Tool Requirements

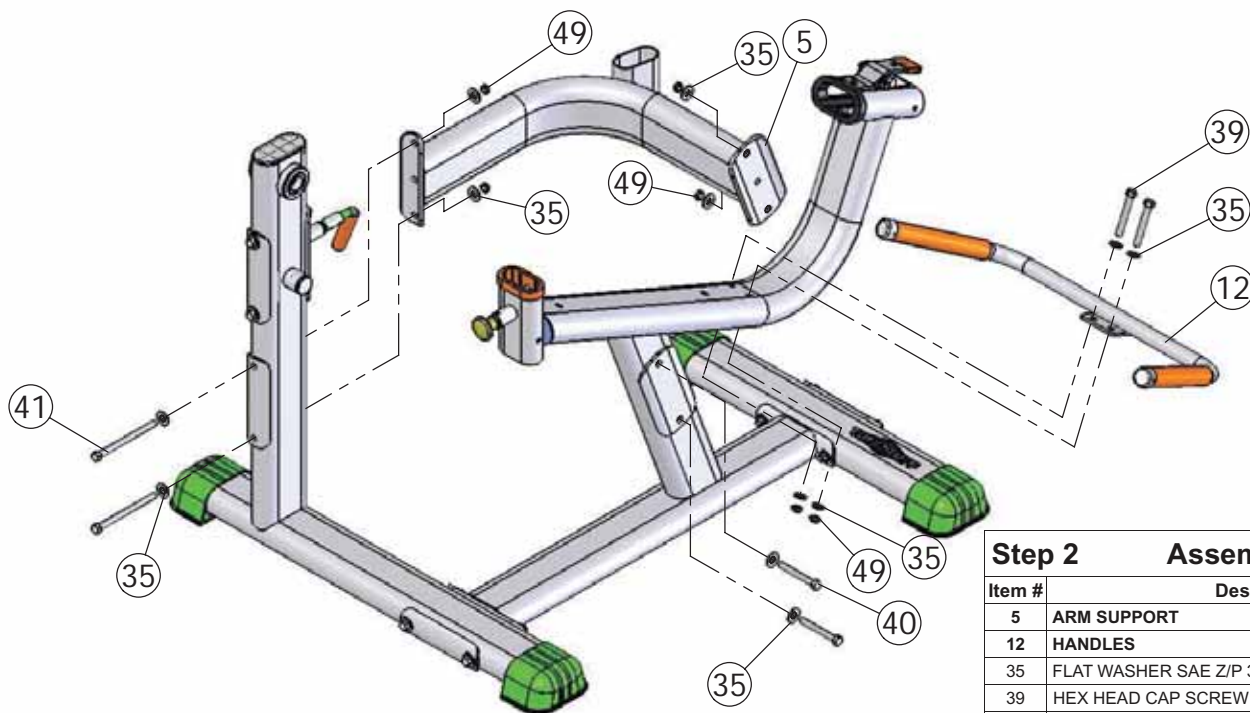
1. One 7/8" combination wrench
2. One 3/4" combination wrench
3. One 9/16" combination wrench
4. One 1/2" combination wrench
5. One 7/16" combination wrench
6. One ratchet
7. One 9/16" socket
8. External Retaining-ring pliers
9. One hammer
10. One rubber mallet
11. Windex or household glass cleaner
12. Measuring tape
13. Utility knife

Hardware Measurement Diagram



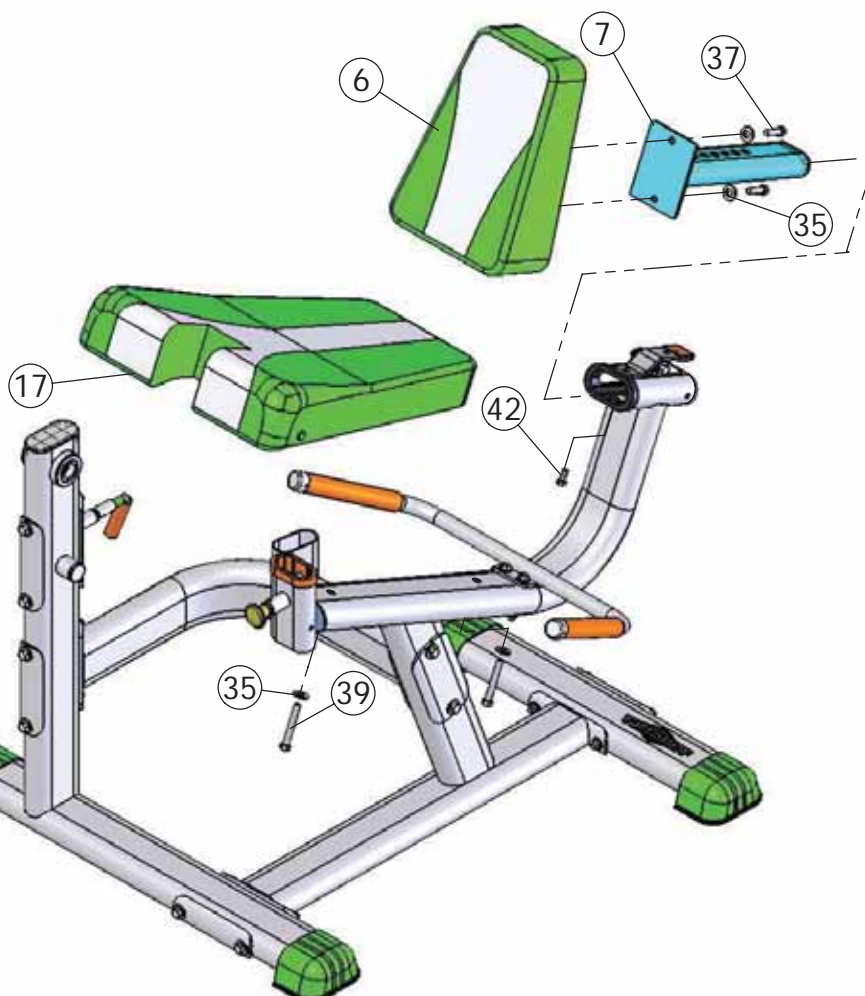
Step 1 Assembly List

Item #	Description	Qty.
1	MAIN FRAME	1
11	FRONT FRAME	1
15	REAR FRAME	1
35	FLAT WASHER SAE Z/P 3/8"	8
41	HEX HEAD CAP SCREW GR-5 Z/P 3/8-16 X 5	4
49	NYLON INSERT JAM LOCK NUT Z/P 3/8-16	4
50	PLASTIC HORIZONTAL ELLIPTICAL SHOE	4

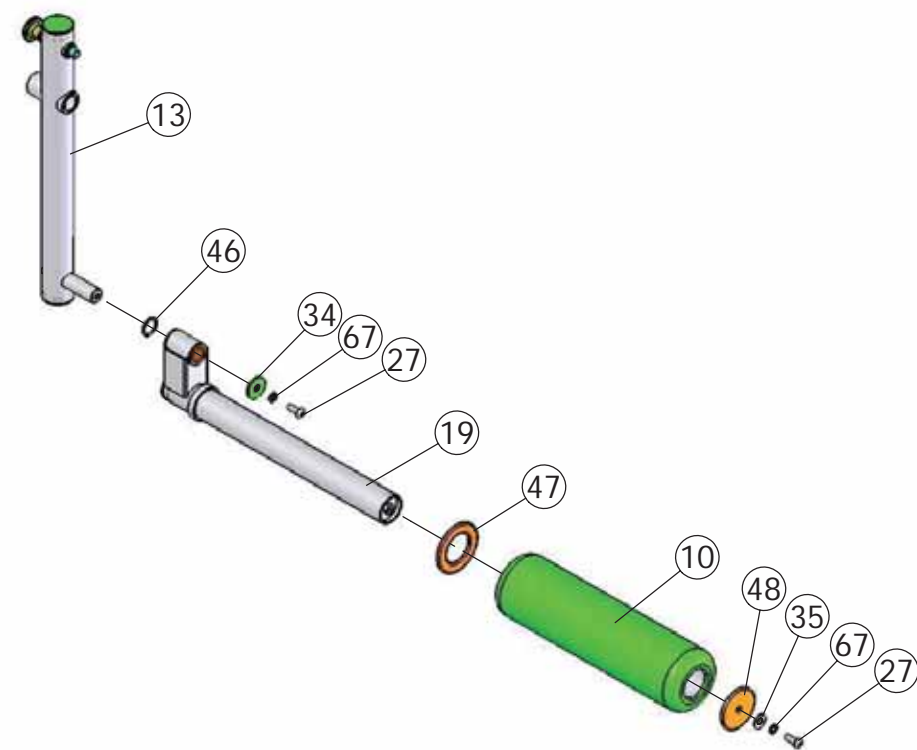


Step 2 Assembly List		
Item #	Description	Qty.
5	ARM SUPPORT	1
12	HANDLES	1
35	FLAT WASHER SAE Z/P 3/8"	12
39	HEX HEAD CAP SCREW GR-5 Z/P 3/8-16 X 2 3/4	2
40	HEX HEAD CAP SCREW GR-5 Z/P 3/8-16 X 3	2
41	HEX HEAD CAP SCREW GR-5 Z/P 3/8-16 X 5	2
49	NYLON INSERT JAM LOCK NUT Z/P 3/8-16	6

Step 3 Assembly List		
Item #	Description	Qty.
6	BACK PAD	1
7	BACK PAD ADJUSTABLE TUBE	1
17	SEAT PAD	1
35	FLAT WASHER SAE Z/P 3/8"	4
37	HEX HEAD CAP SCREW GR-5 Z/P 3/8-16 X 1 1/4	2
39	HEX HEAD CAP SCREW GR-5 Z/P 3/8-16 X 2 3/4	2
42	HEX HEAD CAP SCREW GR-5 Z/P 5/16-18 X 3/4	1

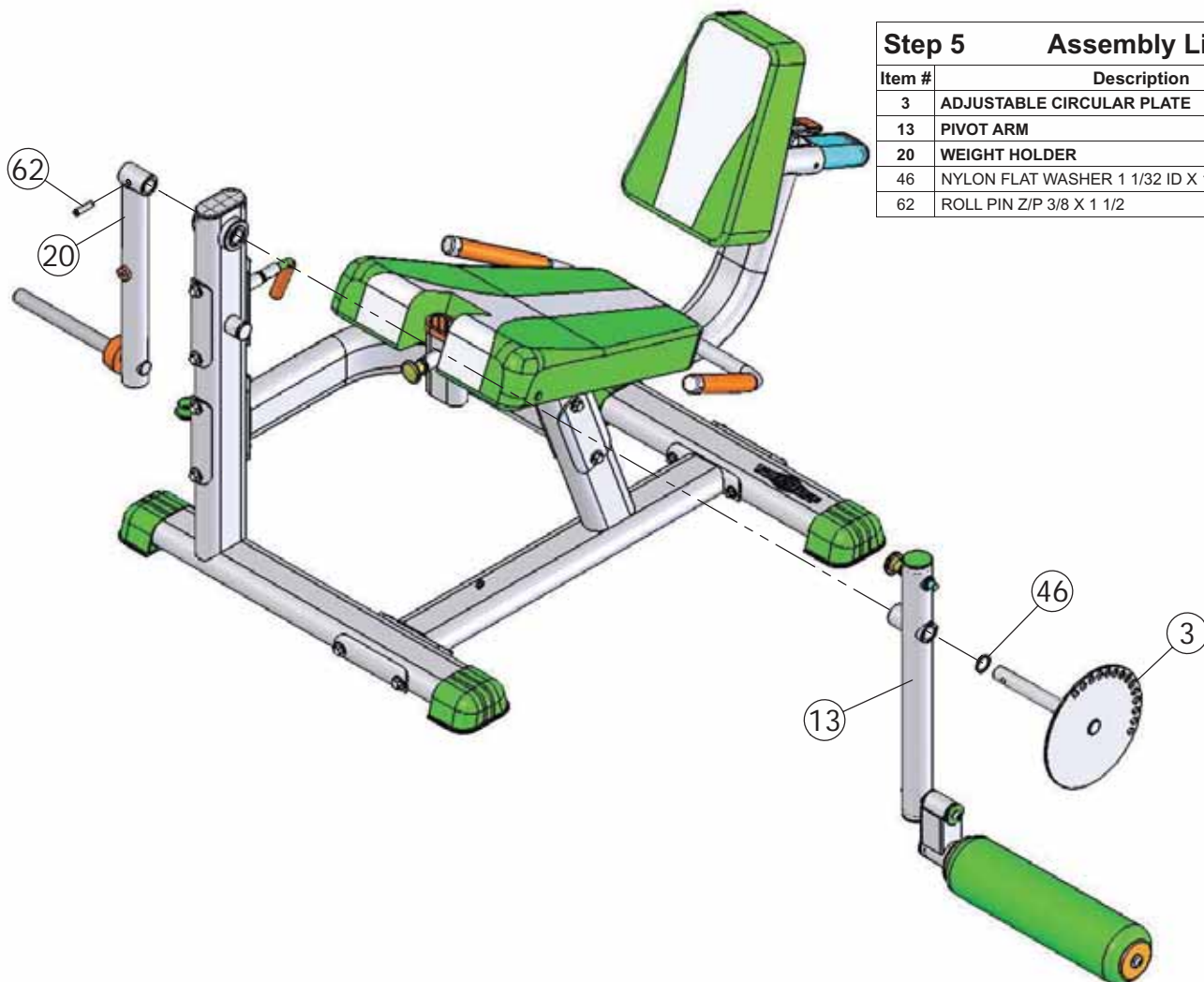


Steps 4-5



Step 4 Assembly List

Item #	Description	Qty.
10	FOAM FOOT ROLL 2 1/4 X 4 1/4 X 16 W/VINYL	1
13	PIVOT ARM	1
19	SWIVEL FOOT ROLL TUBE	1
27	BUTTON HEAD SOCKET CAP SCREW Z/P 3/8-16 X 1	2
34	FLAT WASHER 3/8 ID X 1 1/2 OD X 3/16	1
35	FLAT WASHER SAE Z/P 3/8"	1
46	NYLON FLAT WASHER 1 X 1 1/4 X 1/16	1
47	NYLON FOAM ROLL WASHER 2 X 3 1/2	1
48	NYLON FOAM ROLL WASHER 3/8 X 3	1
67	SPLIT LOCK WASHER Z/P 3/8"	2

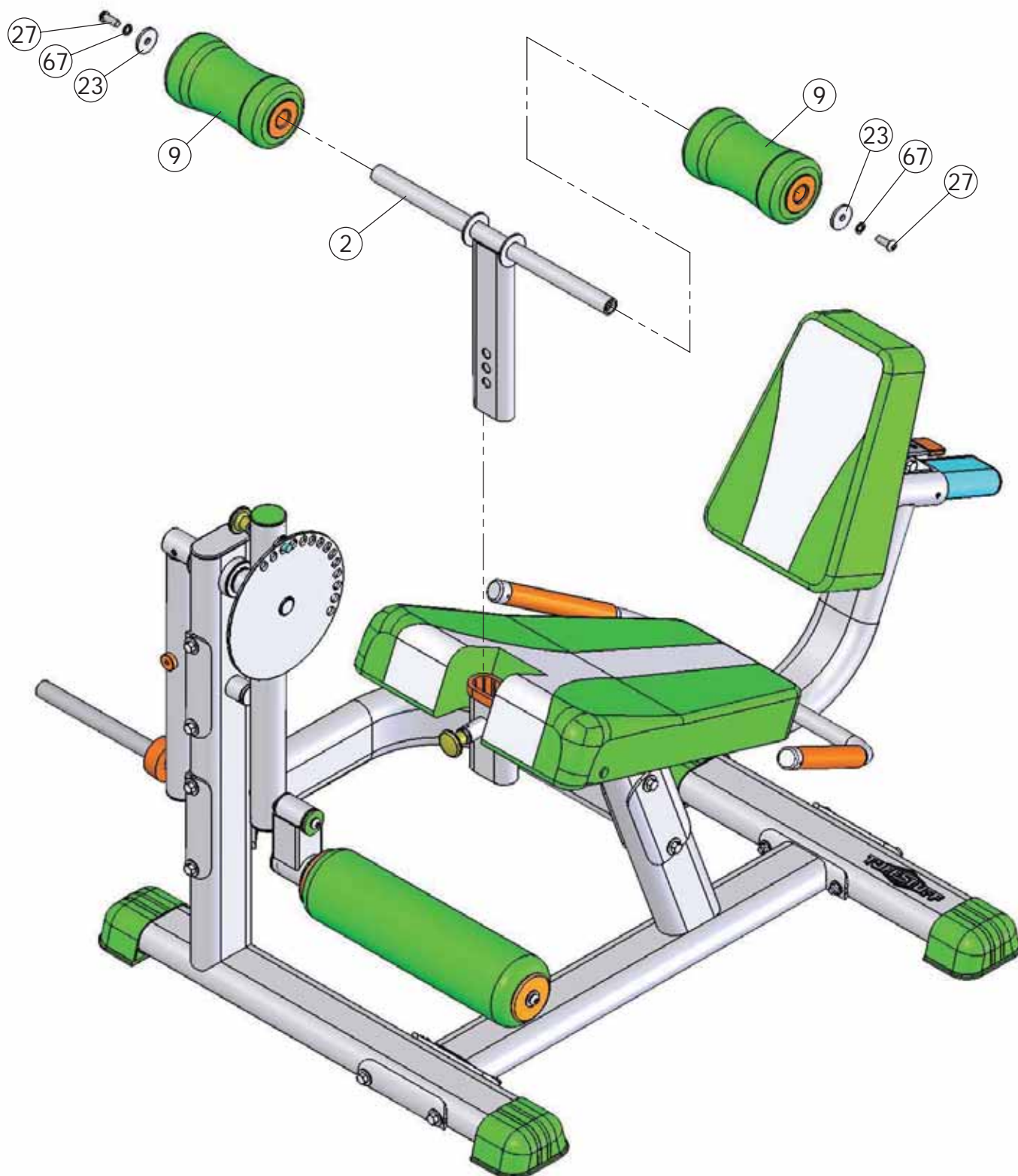


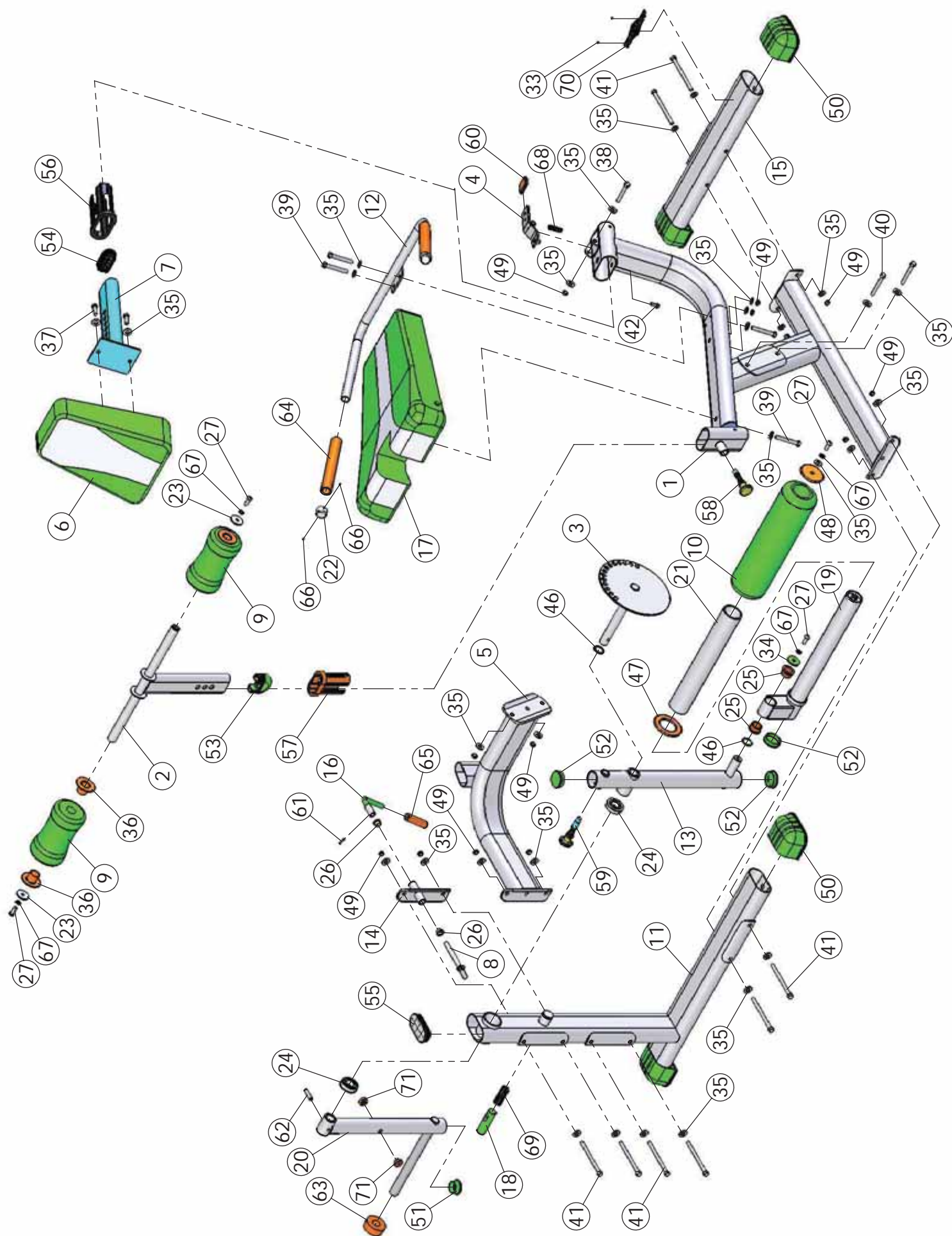
Step 5 Assembly List

Item #	Description	Qty.
3	ADJUSTABLE CIRCULAR PLATE	1
13	PIVOT ARM	1
20	WEIGHT HOLDER	1
46	NYLON FLAT WASHER 1 1/32 ID X 1 55/64 OD X 1/8	1
62	ROLL PIN Z/P 3/8 X 1 1/2	1

Step 6 Assembly List

Item #	Description	Qty.
2	ADJ HOLD DOWN T-BAR	1
9	FOAM FOOT ROLL 1 X 4 X 7 W/VINYL	2
23	ALUMINUM WASHER .390 ID X 1.500 OD X .150 THK	2
27	BUTTON HEAD SOCKET CAP SCREW Z/P 3/8-16 X 1	2
67	SPLIT LOCK WASHER Z/P 3/8"	2





REV1

RLE-382

Parts List

COLOR CHART
 GRAY= SUB-ASSEMBLY PARTS
 BLACK= HARDWARE

Item No.	Description	Rev.	Part No.	QTY	ITEM	DESCRIPTION	PART NO.	QTY
1	MAIN FRAME	0	UP6162	1	37	HEX HEAD CAP SCREW GR-5 Z/P 3/8-16 X 1 1/4	BNH2038	2
2	ADJ HOLD DOWN T-BAR	0	UP6164	1	38	HEX HEAD CAP SCREW GR-5 Z/P 3/8-16 X 2 1/2	BNH2044	1
3	ADJUSTABLE CIRCULAR PLATE	0	UP4964	1	39	HEX HEAD CAP SCREW GR-5 Z/P 3/8-16 X 2 3/4	BNH2045	4
4	ADJUSTABLE RELEASE HOLDER	0	UP3739	1	40	HEX HEAD CAP SCREW GR-5 Z/P 3/8-16 X 3	BNH2046	2
5	ARM SUPPORT	0	UP1663	1	41	HEX HEAD CAP SCREW GR-5 Z/P 3/8-16 X 5	BNH2051	8
6	BACK PAD	0	UP4972	1	42	HEX HEAD CAP SCREW GR-5 Z/P 5/16-18 X 3/4	BNH2049	1
7	BACK PAD ADJUSTABLE TUBE	0	UP4961	1	43	HEX KEY ALLOY 3/32"	BNH0372	1
8	CONCEALED RELEASE STOPPER PRONG	0	UP4968	1	44	HEX KEY ALLOY 7/32"	BNH0575	1
9	FOAM FOOT ROLL 1 X 4 X 7 W/VINYL	0	UP3785	2	45	LITHIUM GREASE SMALL CONTAINER	BNH0705	1
10	FOAM FOOT ROLL 2 1/4 X 4 1/4 X 16 W/VINYL	0	UP3996	1	46	NYLON FLAT WASHER 1 X 1 1/4 X 1/16	BNH0393	2
11	FRONT FRAME	0	UP4958	1	47	NYLON FOAM ROLL WASHER 2 X 3 1/2	BNH2083	1
12	HANDLES	0	UP4960	1	48	NYLON FOAM ROLL WASHER 3/8 X 3	BNH2082	1
13	PIVOT ARM	0	UP4965	1	49	NYLON INSERT JAM LOCK NUT Z/P 3/8-16	BNH2026	13
14	PIVOT HOUSING PLATE	0	UP4970	1	50	PLASTIC HORIZONTAL ELLIPTICAL SHOE	BNH1847	4
15	REAR FRAME	0	UP4957	1	51	PLASTIC INSERT CAP 1 3/4" RD 10-14 GA	BNH0011	1
16	RELEASE HANDLE	0	UP4969	1	52	PLASTIC INSERT CAP 2" RD 10-14 GA	BNH0004	3
17	SEAT PAD	1	UP4971	1	53	PLASTIC INSERT CAP ELLIPTICAL 30 mm X 70 mm	BNH2272	1
18	STOPPER PRONG	0	UP4963	1	54	PLASTIC INSERT CAP ELLIPTICAL 1 1/2 X 3	BNH1795	1
19	SWIVEL FOOT ROLL TUBE	0	UP4966	1	55	PLASTIC INSERT CAP ELLIPTICAL 2 X 4	BNH1794	1
20	WEIGHT HOLDER	0	UP4967	1	56	PLASTIC INSERT ELLIPTICAL GUIDE (2X4)	BNH1760	1
21	ABS PIPE 2 X 15 1/2		BNH1038	1	57	PLASTIC INSERT ELLIPTICAL TUBE GUIDE (30 mm X 70 mm)	BNH2266	1
22	ALUMINUM CAP 1.020" RD (CAP-100)		BNH0537	2	58	PULL PIN 1/2 X 2 3/4 SHORT NOSE (YELLOW KNOB)	BNH0640	1
23	ALUMINUM WASHER .390 ID X 1.500 OD X .150 THK		BNH1541	2	59	PULL PIN 1/2 X 3 1/2 (YELLOW)	BNH0603	1
24	BALL BEARING #W 516		BNH0628	2	60	RELEASE LEVER PROTECTIVE COVER	BNH1940	1
25	BRONZE BUSHING 1 X 1 1/4 X 3/4 X 1 1/2 X 1/8		BNH0527	2	61	ROLL PIN Z/P 3/16 X 3/4	BNH2085	1
26	BRONZE BUSHING 1/2 X 5/8 X 1/2 X 7/8 X 1/8		BNH0528	2	62	ROLL PIN Z/P 3/8 X 1 1/2	BNH0483	1
27	BUTTON HEAD SOCKET CAP SCREW Z/P 3/8-16 X 1		BNH2033	4	63	RUBBER DONUT 1 X 2 1/2	BNH0062	1
28	DECAL-CAUTION WEIGHT TRAINING SAFETY...		BNH0126	1	64	RUBBER GRIP 1 ID X .125 X 8	BNH0966	2
29	DECAL-DANGER TIGHTEN THIS RETAINING...		BNH0142	2	65	RUBBER GRIP 1/2 X 3 1/2	BNH1221	1
30	DECAL-IMPORTANT FOR BEST PERFORMANCE...		BNH1894	2	66	SOCKET SET SCREW ALLOY 10-32 X 1/8	BNH0473	4
31	DECAL-WARNING ATTENTION USERS! MOVING PARTS		BNH1895	1	67	SPLIT LOCK WASHER Z/P 3/8"	BNH2032	4
32	DECAL-WARNING ATTENTION USERS! MOVING PARTS		BNH1896	2	68	STIFF SPRING	BNH0519	1
33	FLAT PHILLIPS SCREW ZINC # 2 X 1/2		BNH1480	2	69	STIFF SPRING 1 ID X 2 3/8	BNH2086	1
34	FLAT WASHER 3/8 ID X 1 1/2 OD X 3/16		BNH1717	1	70	TUFFSTUFF LOGO ALUMINUM SMALL	BNH1323	1
35	FLAT WASHER SAE Z/P 3/8"		BNH2030	31	71	URETHANE BUMPER 962	BNH0244	2
36	FOAM ROLL 1" NYLINER BUSHING		BNH2025	4				

DO NOT DISCARD THIS MANUAL



HOME LIFETIME WARRANTY

TuffStuff products are warranted to the retail purchaser to be free from defects in materials and workmanship. TuffStuff exclusive Home Lifetime Warranty coverage extends for the life of the product while owned by the original retail purchaser, and used only in a home or residential setting unless otherwise noted in the owner's manual.

This warranty does not cover:

1. TuffStuff products sold for and used in a commercial or institutional setting.
2. Any damage, failure or loss caused by accident, misuse, neglect, abuse, improper assembly, improper maintenance, or failure to follow instructions or warnings in the owner's manual and warning labels posted on the machine.
3. Use of products in a manner for which they were not designed.
4. Original product that is altered, or the use of replacement parts and components of another manufacturer other than TuffStuff.

Limitations:

The foregoing shall constitute the sole remedy of the purchaser and the sole liability of TuffStuff with regard to warranty, whether express or implied by operation of law or otherwise, including but not limited to any implied warranties of merchantability or fitness. TuffStuff shall in no event be liable for incidental or consequential losses, damages or expenses in connection with exercise products. TuffStuff's liability hereunder is expressly limited to the repairs or replacements of warranted defective parts.

Procedures:

Warranty service will be performed at TuffStuff's facility in Pomona, California. TuffStuff will have the option of either repair or replacement at no charge for any defective product. Purchaser is responsible for installation of repaired or replaced parts and all transportation and insurance costs on returned or replaced equipment to and from TuffStuff's facility in Pomona.

This warranty gives you specific legal rights and you may also have other rights, which may vary from state to state. Effective July 1, 2004.

This warranty is the final, complete and exclusive agreement of the parties with respect to the quality or performance of the equipment and no action for breach of this written warranty or any implied warranty shall be commenced more than one (1) year after the accrual of the cause of action. No modification of this warranty or waiver of its terms shall be binding on either party unless approved in writing by an authorized representative of the party. Contact TuffStuff at 1325 E. Franklin Avenue, Pomona, California 91766, before returning any defective equipment.

Note: Retain your sales receipt and be sure to mail in the warranty registration card to insure that a permanent record of your purchase is on file with the factory and to avoid unnecessary delays in warranty service.

TuffStuff Fitness Equipment, Inc.

1325 E. Franklin Avenue

Pomona, CA 91766, USA

Ph: 909-629-1600 Fax: 909-629-4967

E-mail: service@tuffstuff.net Net: www.tuffstuff.net