

Fall 2009

A Systematic Approach to Endodontic Diagnosis - Free On-Line CE Opportunity

Orofacial pain can sometimes be tricky to diagnose. While the most common cause is pulpitis, referred pain from a non-odontogenic source can be difficult to differentiate from odontogenic pain. In an article written by Dr. Ali Allen Nasseh, who serves as Clinical Instructor, Harvard School of Medicine and maintains a private practice in Boston. Dr. Nasseh has provided readers with a concise method to assess odontogenic pain, differentiate from non-odontogenic pain, and either treat the patient to provide pain relief or direct the patient to a specialist for further diagnosis and treatment. This article is a great tool for dentists, but also beneficial for the clinical team members who are involved in the diagnostic process. Because many conditions share common symptoms, it is important to understand the fundamentals of effective diagnosis.

Tufts University School of Dental Medicine provides 2 hours of FREE Continuing Education credit for each article for those who wish to document their continuing education efforts. To view the article and participate in a CE lesson, please go to <http://www.insidedentistry.net/continuingeducation.php> where each lesson can be reviewed and the test taken online. Log on, take the CE quiz and, upon successful completion, a certificate can be printed immediately.

Strategies for Successful Implant Planning and Outcome - 6 Hours Complimentary CE

Please mark your calendar for **Friday, December 4th, 2009** when we will be hosting our **second annual year-end CE opportunity which will be held at Holiday Inn in Covington**. This year, we are very excited to feature Dr. **James Tinnin** from Fayetteville, Arkansas. Dr. Tinnin will share his expertise in the field of implantology and provide attendees with practical advice on how to avoid pitfalls and insure a better outcome for the patient. Dr. Tinnin incorporated implantology into his endodontic practice and has since become a recognized leader in both specialties. He lectures and provides hands-on training for the **Ankylos Implant System by Dentsply-Tulsa**.

Additional details, including enrollment information, will be released in a few weeks.

CDC Panel Recommends H1N1 Vaccine for Health Care Workers

The top story in the August 17th edition of the ADA NEWS outlines the **CDC advisory committee's recommendation regarding swine flu vaccination for health care workers**. THE ADA offers more insight about this issue online at http://www.ada.org/prof/resources/topics/swine_flu.asp, or contact the Louisiana Dept. of Health and Hospitals at (225)342-9500 by phone or dhwebadmin@la.gov by email.

Federal Trade Commission Red Flags Rule Update

The American Dental Association is working directly with legislators in Congress in an attempt to exempt small health care providers from the Red Flags Rule. Because of their efforts thus far, a 90-day extension has been granted, and the **deadline has changed from August 1st to November 1st**. This additional time provides an opportunity to continue to build Congressional support for the bill.

For more information about the Red Flags Rule, please contact Michael Graham, Managing Director of Government Affairs at (202) 898-2400 or email him at govtpol@ADA.org.

Cone Beam CT Impact on Endodontics – A Case Study

Healthy, adult female had a crown placed on tooth #4 in early 2008. The patient reported on/off tenderness that was alleviated with occlusal adjustment. Symptoms returned again, and the referral for endodontic assessment and treatment was made. Diagnostic test results were consistent with necrotic pulp, and a root canal was performed.

Two months later, the patient returned. She reported that the tooth did well for 2 weeks following the root canal. The crown had broken and a temporary crown had been placed. She was still experiencing sensitivity to brushing and chewing.



A digital periapical radiograph was taken (see Figure 1) and no indication of a problem was revealed. A second radiograph provided no additional information. A cone beam CT scan was taken, and examination of the images revealed a missed buccal canal.

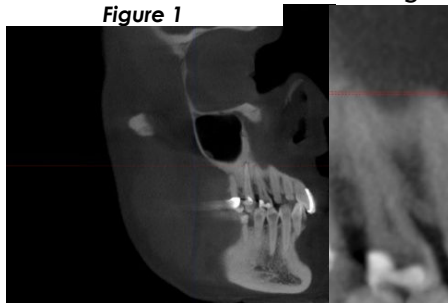
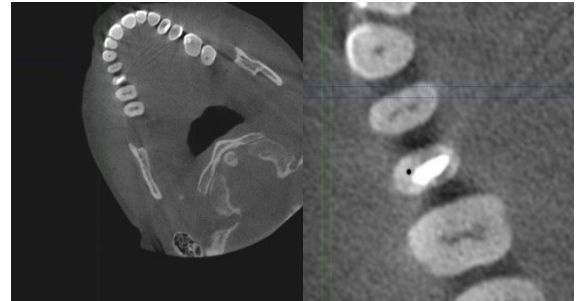


Figure 1

The axial view, at a setting of .25mm thickness, allowed us to localize the canal and measure its distance from the treated canal (See Figure 2); the sagittal view, also set at .25mm thickness, revealed the pathway of the canal (See Figure 3).



Based on the patient's symptoms, confirmed by cone beam CT, the presence of an untreated canal is the likely cause of her chief complaint. The tooth will be reaccessed and the buccal canal will be treated. Further

follow-up will be recommended to confirm that the symptoms have resolved as expected.

Figure 2-Axial view, enlarged on right. The location of the buccal canal is indicated by the black dot

Cone beam CT is a valuable tool that allows us to answer questions that radiographic and visual diagnosis cannot. In this case, it provided us with not only the presence of the buccal canal, but also its location in relation to other structures. Cone beam CT has helped to confirm the presence of fractures, view lesions in three dimensions, and eliminate superimposition of structures that often impede the effectiveness of traditional radiographs.

We have made this technology available to all members of our dental community. If you would like additional information, or on-site software training to view your patients scan data, please contact Image-3D at (985) 674-5200. Image-3D is currently offering Lunch n' Learn training for doctors and team members. Simply call to schedule and Image-3D will handle all the details.

Updated Pharmacy List Enclosed

Recently, it seems every street corner has a new CVS or Walgreens. While we can't explain this sudden boom in the pharmacy population, we can provide you with the information you need to call 'em. At the time of distribution, some soon-to-open pharmacies do not yet have phone numbers. As the numbers become active we will update the list posted on our website.

Please let us know if you would like additional copies of the list.

We hope everyone enjoyed a great summer and wish you the best during this fall season. It is always our pleasure to work with you and your patients. Your trust and confidence are appreciated.

Sincerely,

Catherine